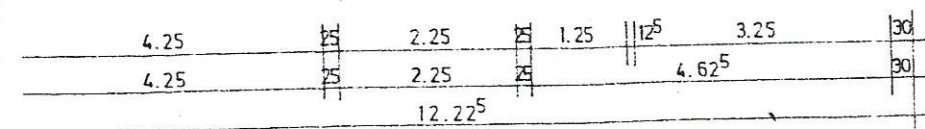
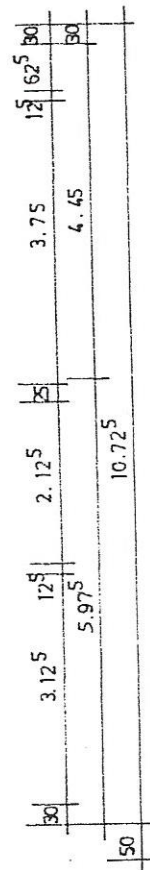
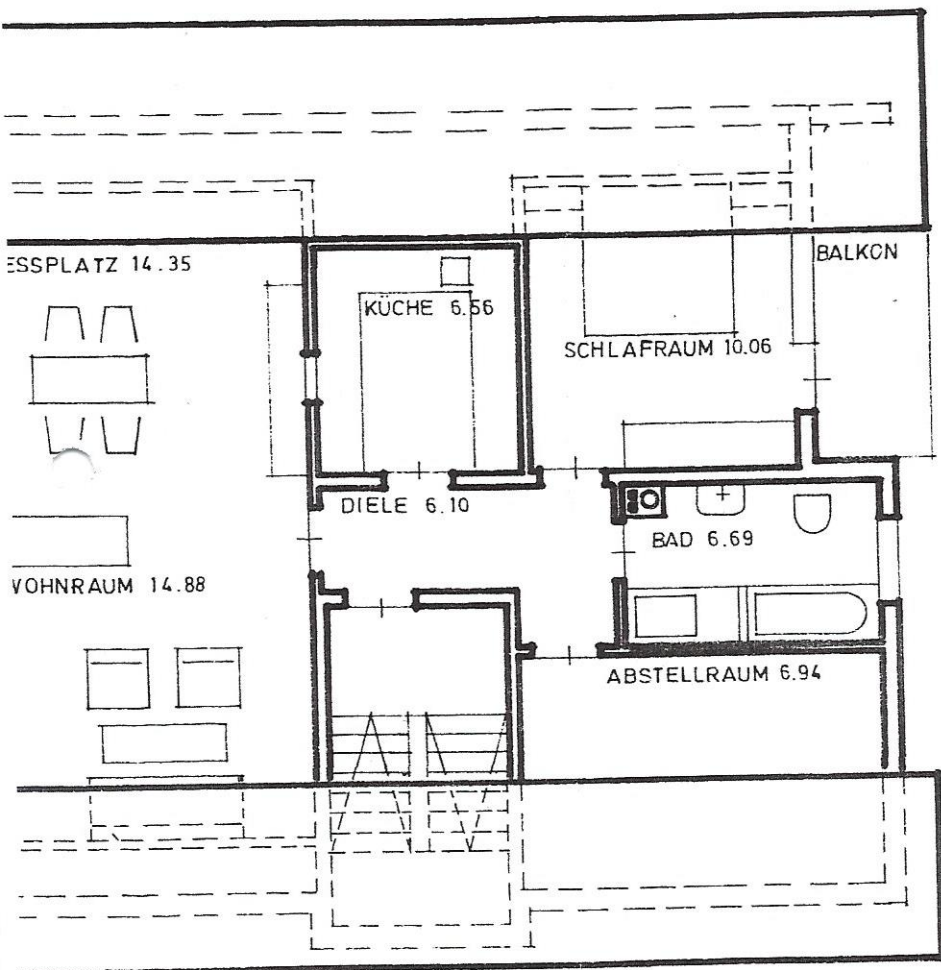
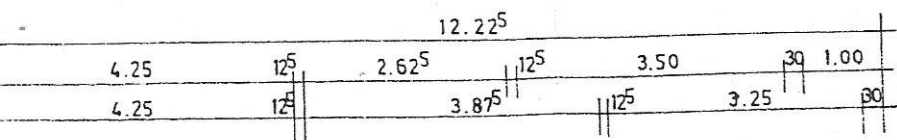
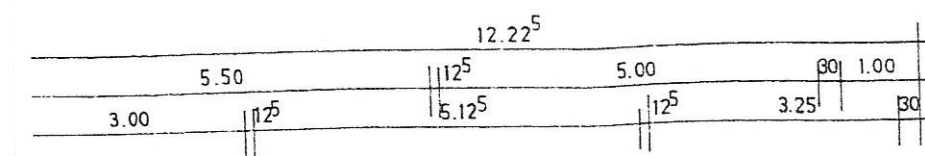


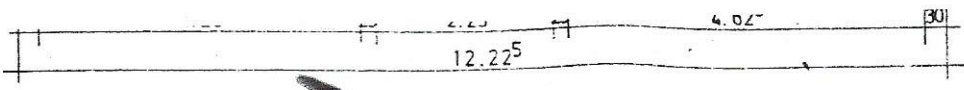
QUERSCHNITT

Gesehen:
 Dipl. Ing. H. Ulrich Liebe
 Prüfingenieur für Baustatik
 7800 Freiburg-Mengen

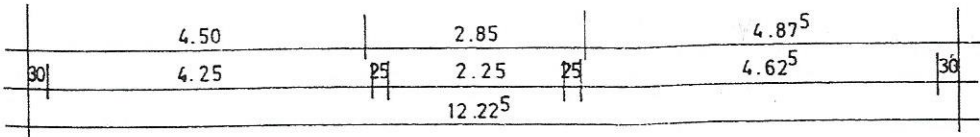
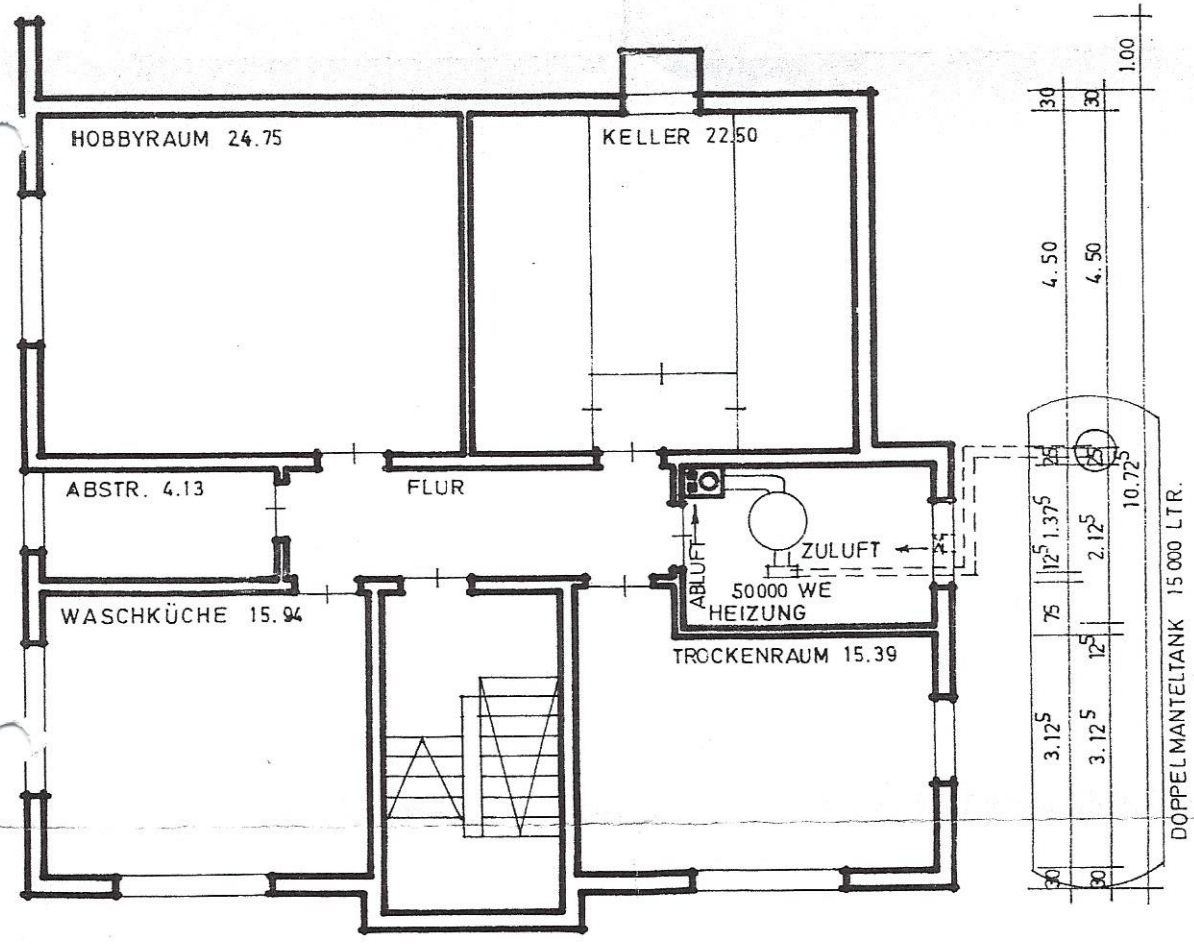
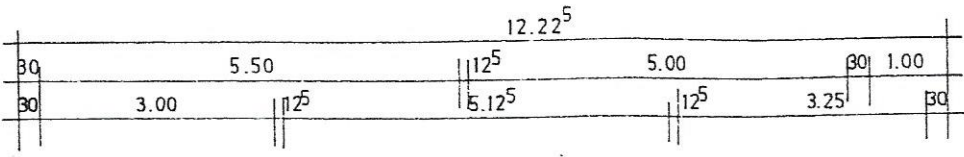


ACHGESCHOSS





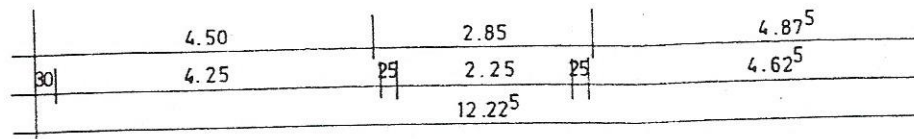
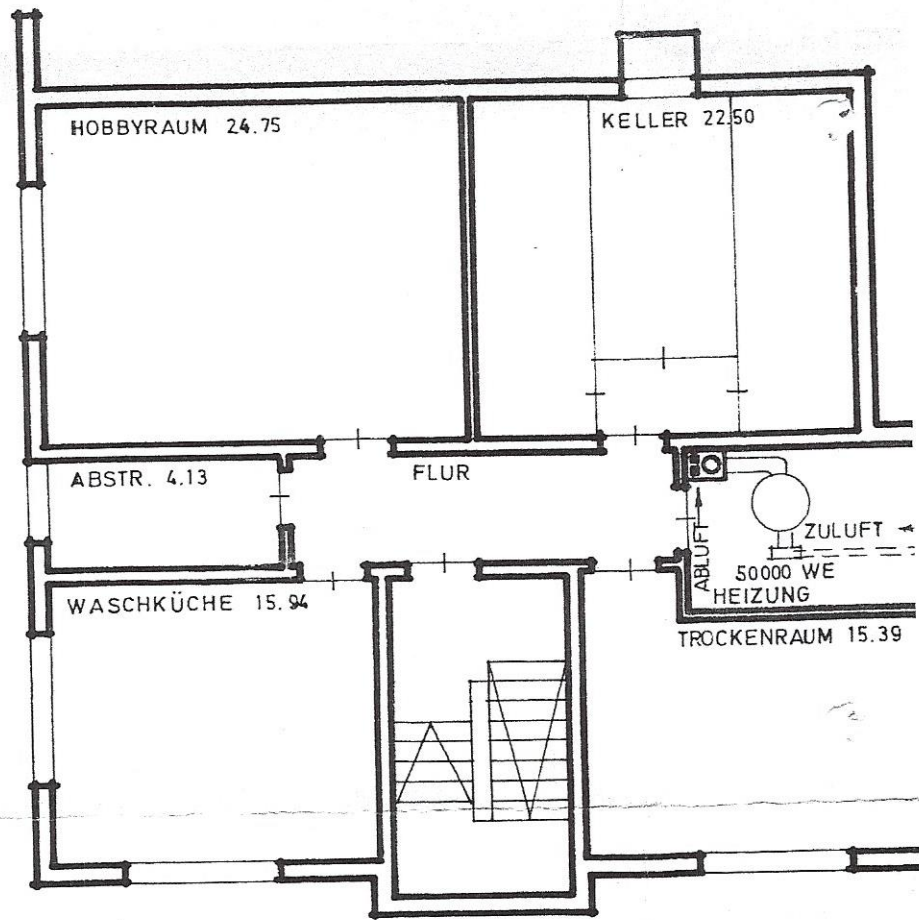
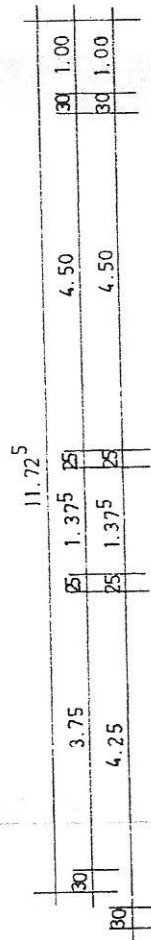
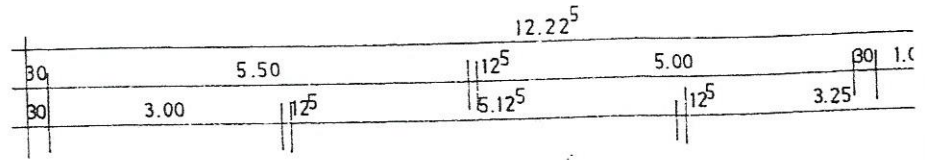
DACHGESCHOSS



KELLERGESCHOSS

12.22⁵

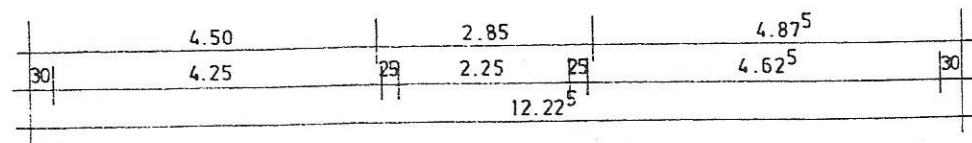
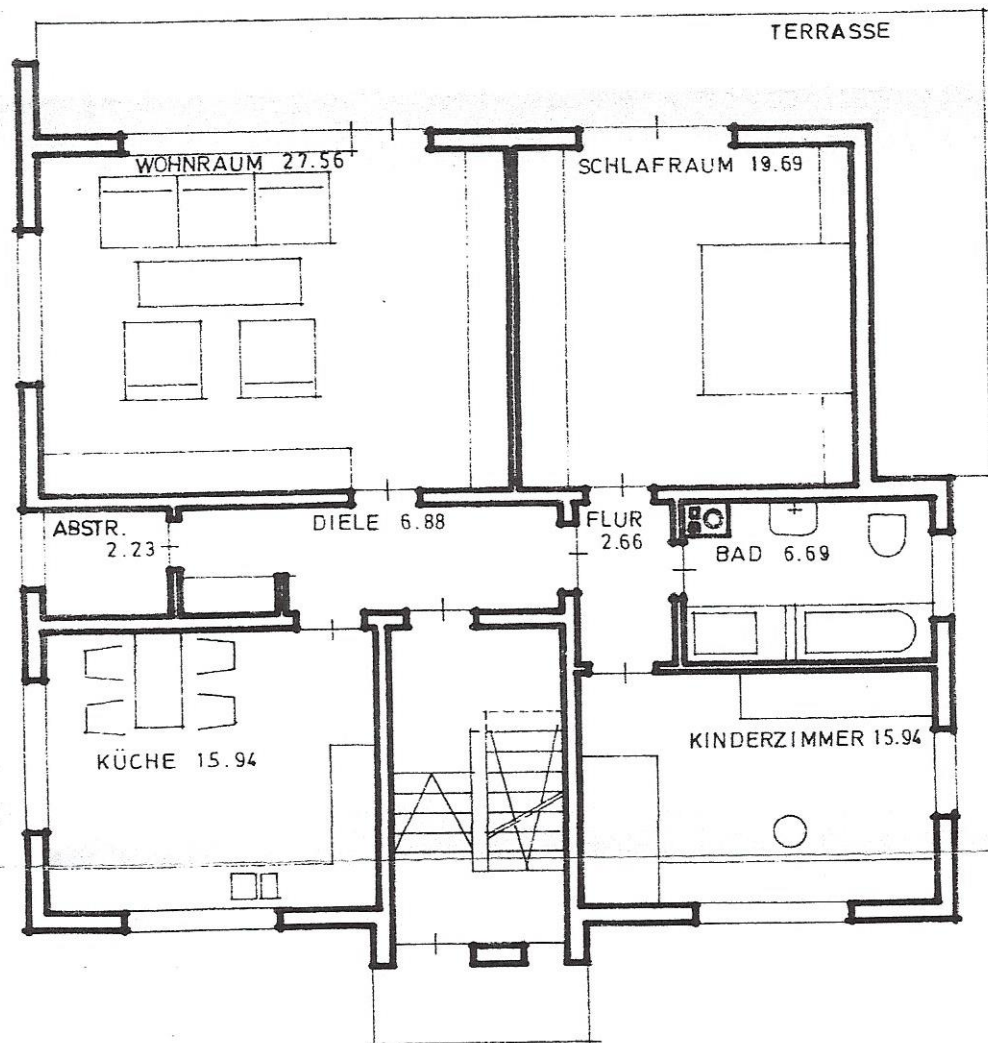
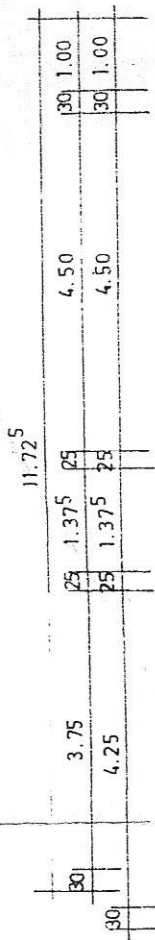
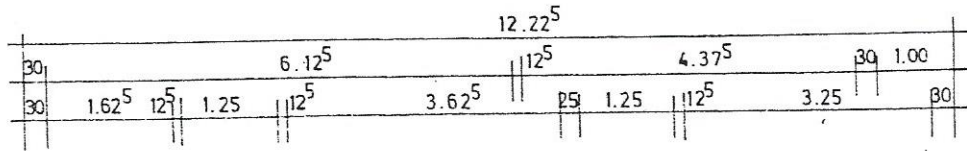
DACHGESCHOSS



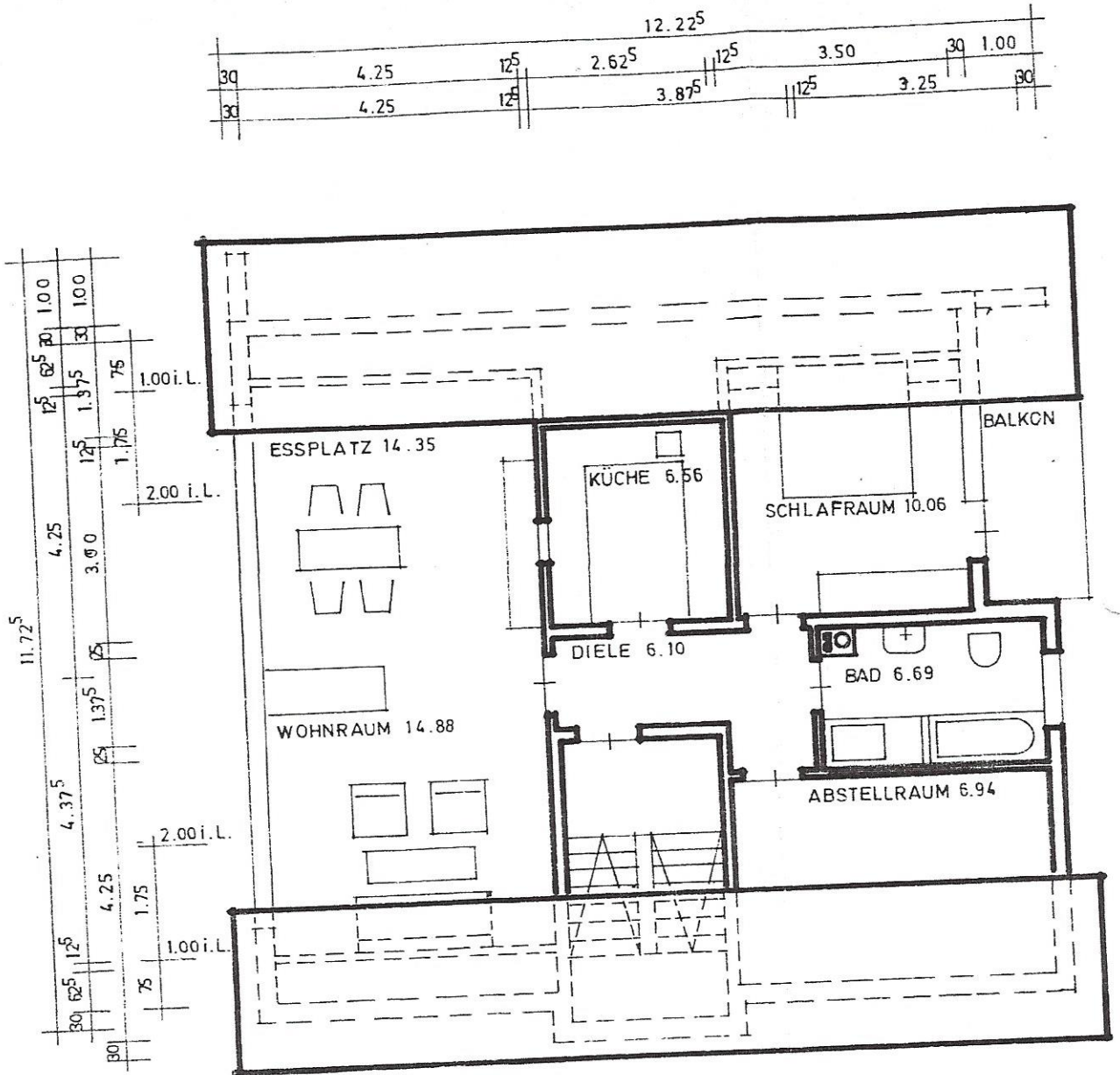
KELLERGEESCHOSS

12.22⁵

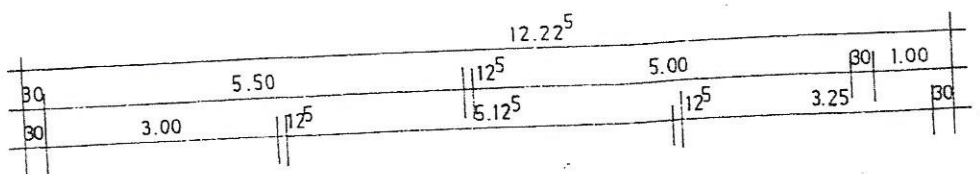
OBERGESCHOSS

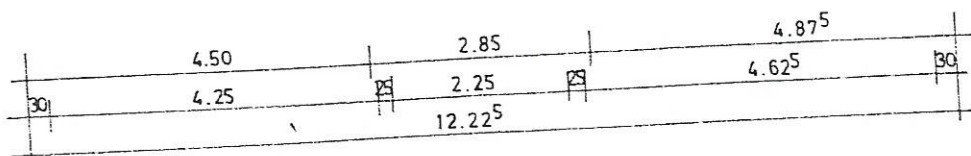
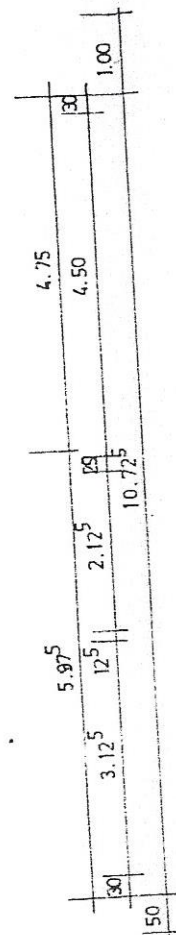
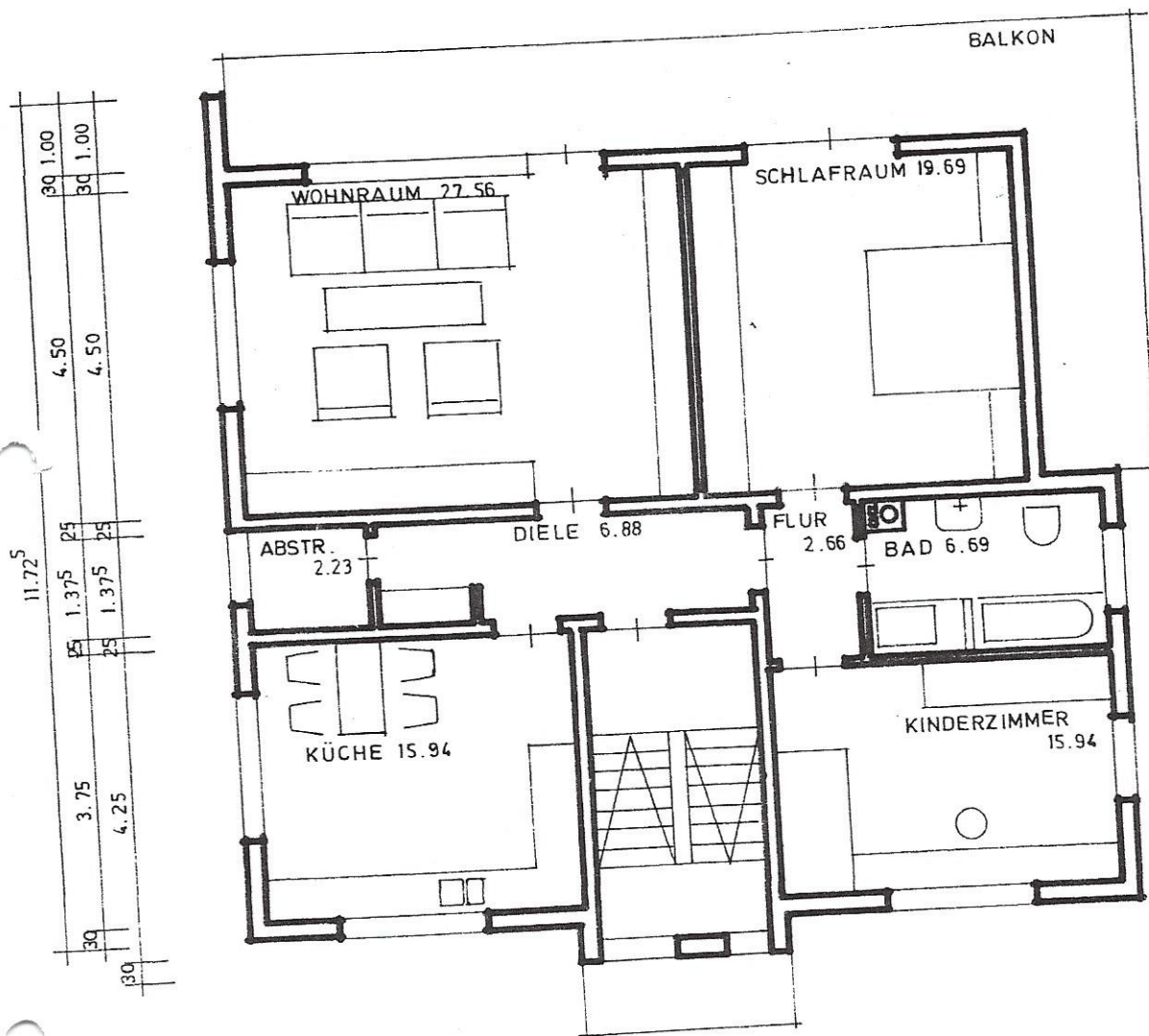
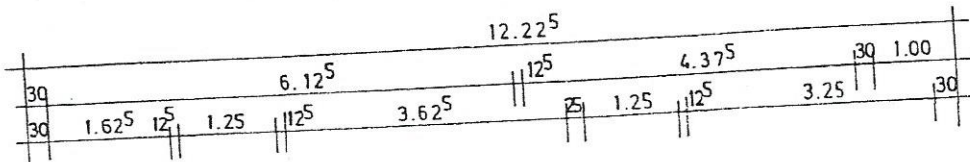


ERDGESCHOSS



DACHGESCHOSS





OBERGESCHOSS

